

APARTMENTS
LEVEL ONE



BUILDING A



BUILDING B



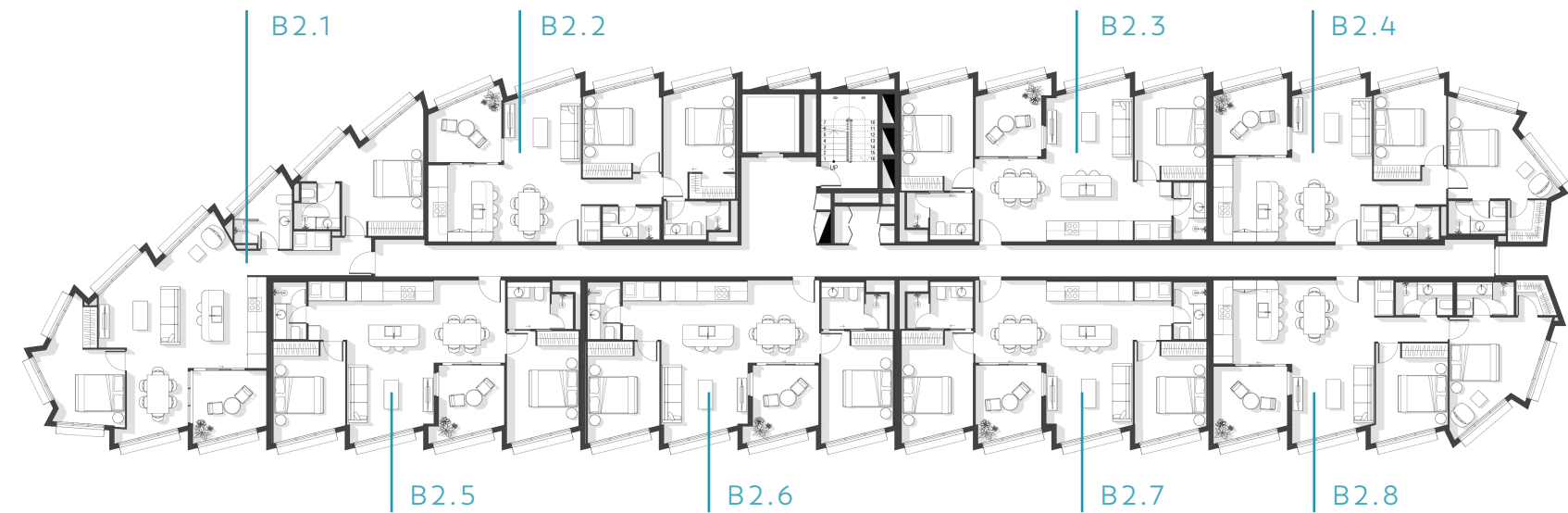
240 HIGH ST, THOMASTOWN 3074

The information and depictions provided are illustrative only and should not be relied upon. The final area dimensions of any apartment sold will be determined by the contract of sale and may differ from what is depicted here. Whilst every effort is made to provide accurate and complete information, the developer does not warrant or represent that the information and illustrations here are free from errors or omissions or are suitable for your intended use. The vendor disclaims all liability associated with any reliance by interested parties or purchasers on the accuracy of the contents of this floor plan page. All information is subject to change without notice.

APARTMENTS
LEVEL TWO



BUILDING A



BUILDING B

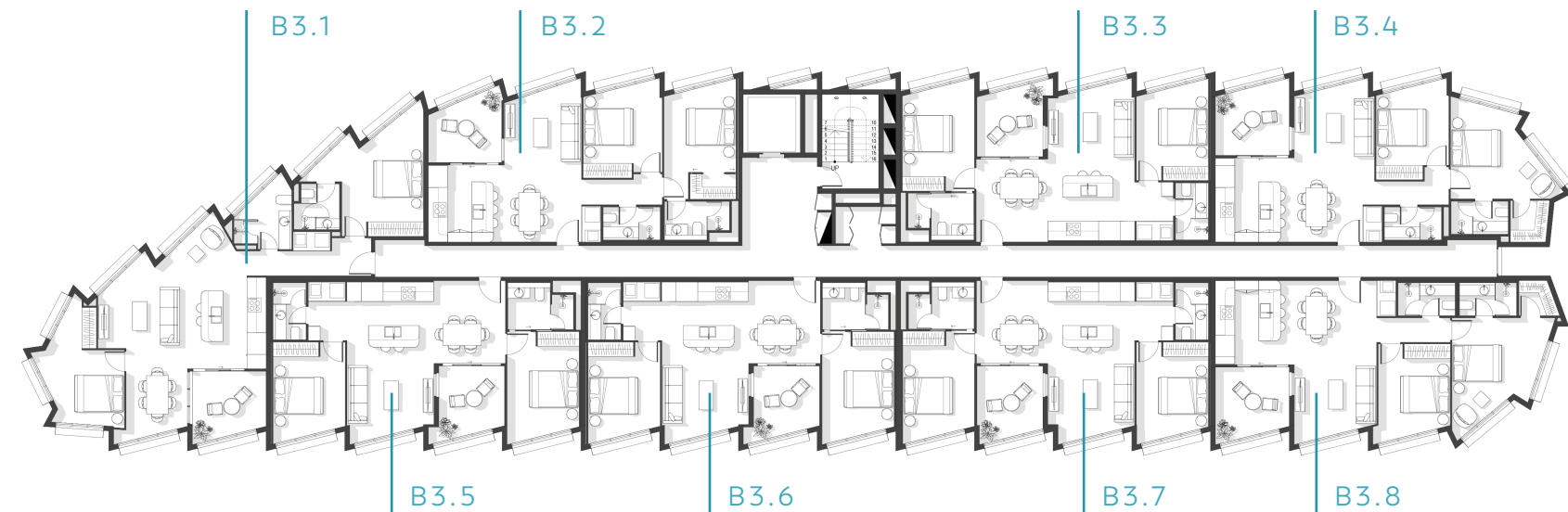
240 HIGH ST, THOMASTOWN 3074

The information and depictions provided are illustrative only and should not be relied upon. The final area dimensions of any apartment sold will be determined by the contract of sale and may differ from what is depicted here. Whilst every effort is made to provide accurate and complete information, the developer does not warrant or represent that the information and illustrations here are free from errors or omissions or are suitable for your intended use. The vendor disclaims all liability associated with any reliance by interested parties or purchasers on the accuracy of the contents of this floor plan page. All information is subject to change without notice.

APARTMENTS
LEVEL THREE



BUILDING A



BUILDING B

240 HIGH ST, THOMASTOWN 3074

The information and depictions provided are illustrative only and should not be relied upon. The final area dimensions of any apartment sold will be determined by the contract of sale and may differ from what is depicted here. Whilst every effort is made to provide accurate and complete information, the developer does not warrant or represent that the information and illustrations here are free from errors or omissions or are suitable for your intended use. The vendor disclaims all liability associated with any reliance by interested parties or purchasers on the accuracy of the contents of this floor plan page. All information is subject to change without notice.

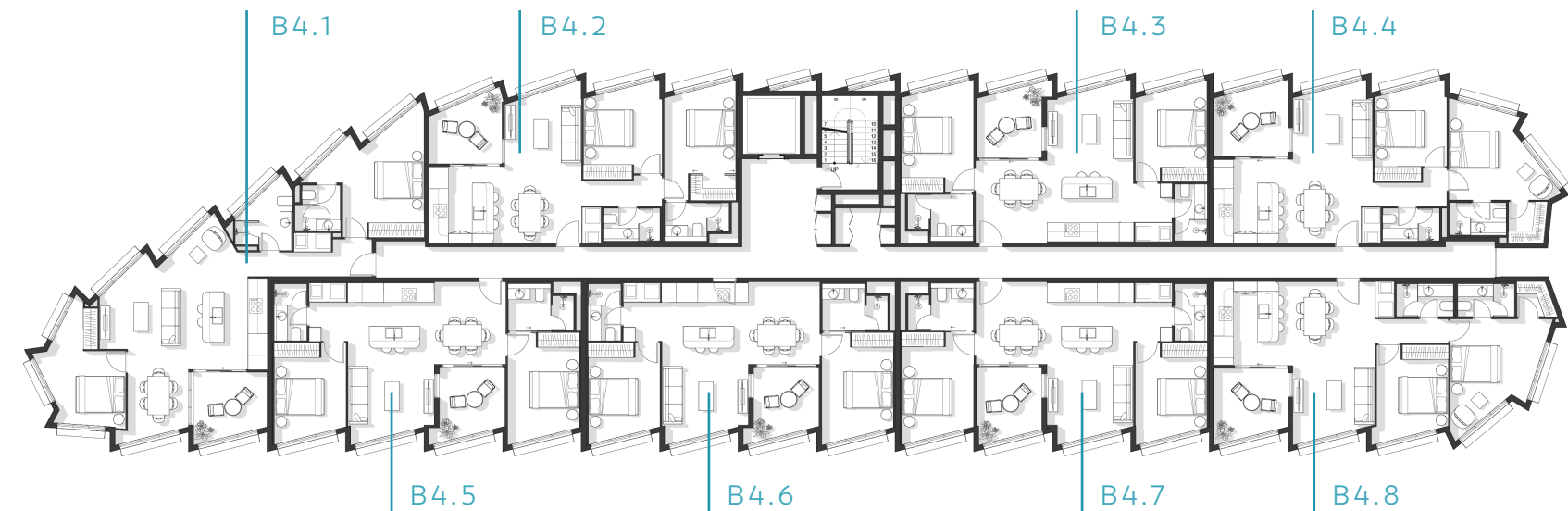
APARTMENTS
LEVEL FOUR



BUILDING A



BUILDING B



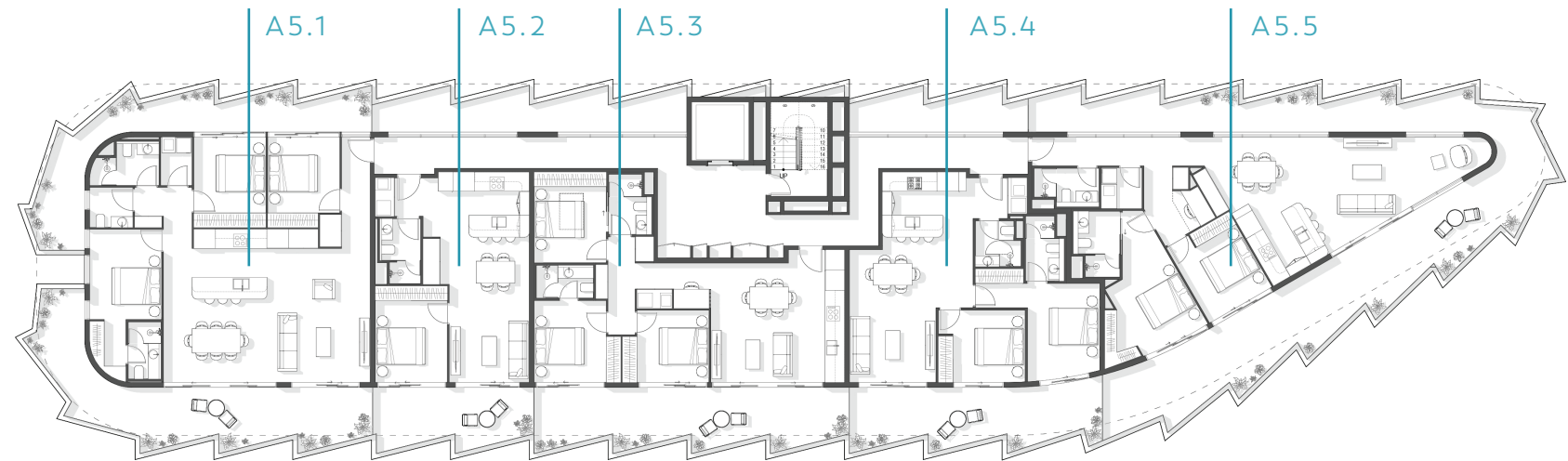
240 HIGH ST, THOMASTOWN 3074

The information and depictions provided are illustrative only and should not be relied upon. The final area dimensions of any apartment sold will be determined by the contract of sale and may differ from what is depicted here. Whilst every effort is made to provide accurate and complete information, the developer does not warrant or represent that the information and illustrations here are free from errors or omissions or are suitable for your intended use. The vendor disclaims all liability associated with any reliance by interested parties or purchasers on the accuracy of the contents of this floor plan page. All information is subject to change without notice.

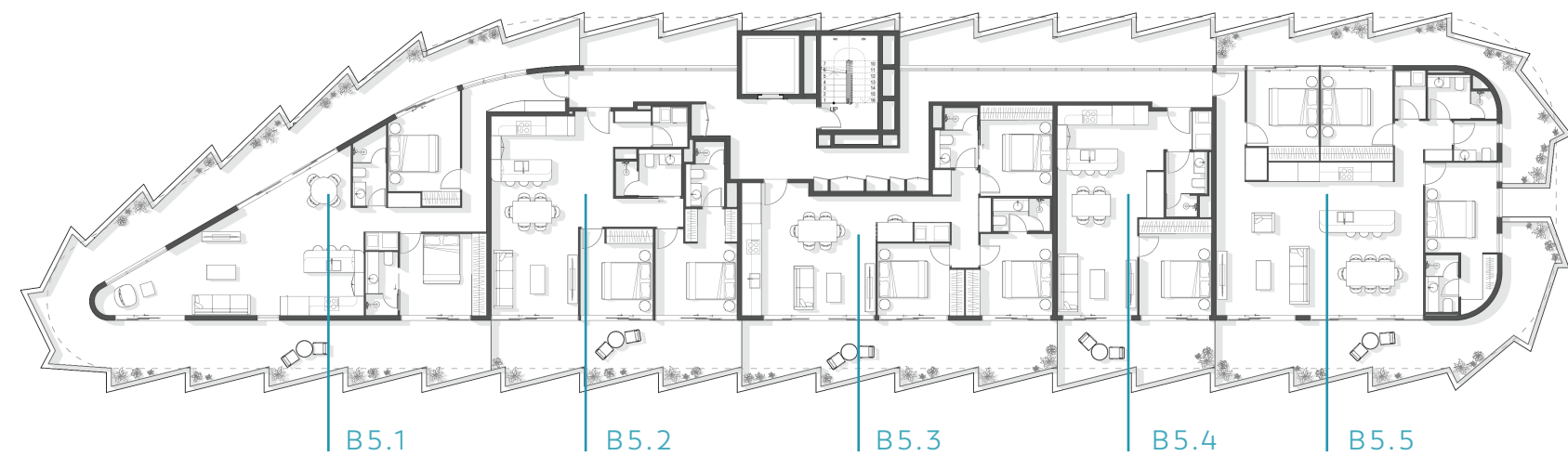
APARTMENTS
LEVEL FIVE



BUILDING A



BUILDING B



240 HIGH ST, THOMASTOWN 3074

The information and depictions provided are illustrative only and should not be relied upon. The final area dimensions of any apartment sold will be determined by the contract of sale and may differ from what is depicted here. Whilst every effort is made to provide accurate and complete information, the developer does not warrant or represent that the information and illustrations here are free from errors or omissions or are suitable for your intended use. The vendor disclaims all liability associated with any reliance by interested parties or purchasers on the accuracy of the contents of this floor plan page. All information is subject to change without notice.